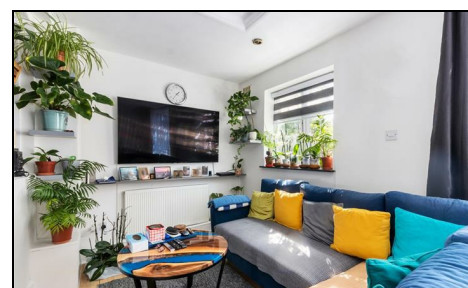


**Lower Downs Road
West Wimbledon, SW20 8QG**

Guide Price £450,000 Leasehold - Share of Freehold



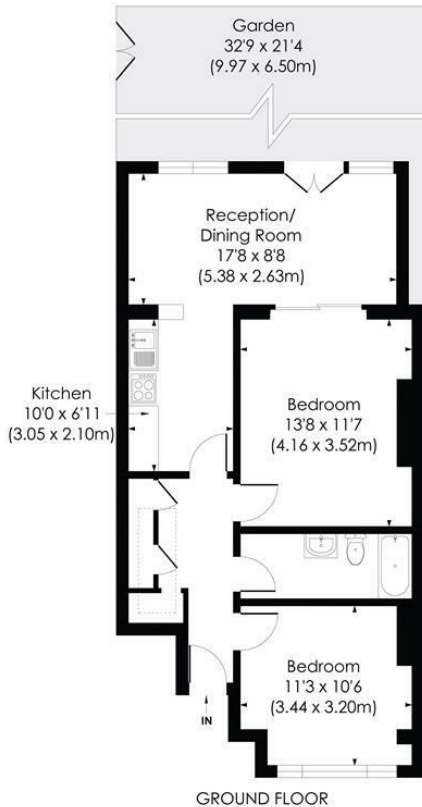
To be sold with Share of Freehold.

This versatile 659 sqft ground floor conversion flat has its own private West facing garden with a side gate access and is offered to the market with no onward chain. Located within easy access to Raynes Park, Wimbledon Chase and Wimbledon Town Centre.

There are double gates into Abbot Avenue and concreted area to the rear garden. Subject to an application to Merton Council and consent for dropped kerb, off-street parking will be possible.

LOWER DOWNS ROAD, SW20

Approx. Gross Internal Floor Area
659 Sq. ft/61.23 Sq. m



© Pixangle Property Marketing Ltd. info@pixangle.com Tel: 0208 870 2118



This floor plan has been prepared for the purpose of illustration only in accordance with the latest RICS code of measuring practice and is not to scale. All measurements and areas are approximate and whilst every effort has been made to ensure the accuracy of the plan contained here, no responsibility is taken for any error, omission or misstatement.

- 659 sqft Extended Ground Floor Conversion
- Private West Facing Rear Garden
- No Onward Chain - Versatile Accommodation
- Potential To Create Off Street Parking Subject to Consent
- Close to Raynes Park Station and High Street
- Modern Kitchen Dining Room
- Easy Access to Wimbledon
- Wimbledon Chase Primary School A.P.A
- EPC Rating - C
- Council Tax Band - C

Energy Efficiency Rating		Current	Potential
Very energy efficient - lower running costs			
(92 plus) A			
(81-91) B			
(69-80) C			
(55-68) D		71	79
(39-54) E			
(21-38) F			
(1-20) G			
Not energy efficient - higher running costs			
England & Wales		EU Directive 2002/91/EC	

For Free Mortgage Quote and Best Mortgage Rates, call Ellisons Mortgage Advisor on 0208 944 9595



Although these particulars are believed to be correct, their accuracy is not guaranteed and they do not form part of any contract.

Celebrating 30 years of successful Sales and Lettings in Merton

